

GALERIE & EDITION STEPHAN WITSCHI

Zwinglistrasse 12, 8004 Zürich Telefon +41 44 242 37 27 galerie@stephanwitschi.ch www.stephanwitschi.ch

ZENA ASSI **HOME IS WHERE THE CHANDELIER HANGS** **June 10 - July 16, 2022**

City Walls



Zena Assi
Home is where the Chandelier hangs #1, 2022
90 x 174 cm
mixed media and paper collage on canvas
Edition number 1/1



Zena Assi
Home is where the Chandelier hangs #2, 2022
90 x 174 cm
mixed media and paper collage on canvas
Edition number 1/1

City Walls



Zena Assi
Red Light, 2022
33 x 45 cm
mixed media and paper collage on canvas
Edition number 1/1



Zena Assi
Power cut, 2022
33 x 45 cm
mixed media and paper collage on canvas
Edition number 1/1



Zena Assi
Lord of the flies, 2022
33 x 45 cm
mixed media and paper collage on canvas
Edition number 1/1



Zena Assi
Desert storm, 2022
33 x 45 cm
mixed media and paper collage on canvas
Edition number 1/1

City Walls



Zena Assi
The gift that cannot fly, 2022
33 x 45 cm
mixed media and paper collage on canvas
Edition number 1/1



Zena Assi
The Bait, 2022
33 x 45 cm
mixed media and paper collage on canvas
Edition number 1/1



Zena Assi
The Morning Paper #1, 2022
33 x 45 cm
mixed media and paper collage on canvas
Edition number 1/1

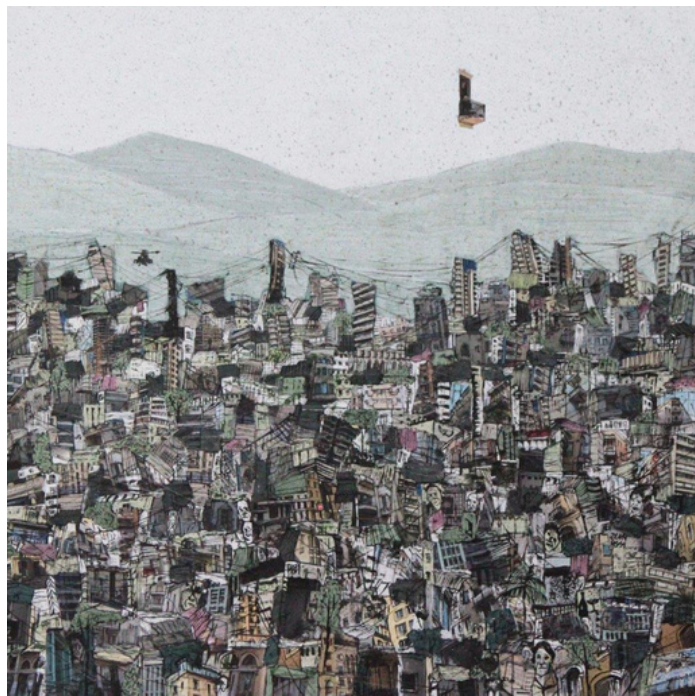


Zena Assi
The Morning Paper #2, 2022
33 x 45 cm
mixed media and paper collage on canvas
Edition number 1/1

City Walls



Zena Assi
Buzzing in my Ears #1, 2022
92 x 91 cm
mixed media and paper collage on canvas
Edition number 1/1



Zena Assi
Buzzing in my Ears #2, 2022
92 x 91 cm
mixed media and paper collage on canvas
Edition number 1/1

GALERIE & EDITION STEPHAN WITSCHI

Zwinglistrasse 12, 8004 Zürich Telefon +41 44 242 37 27 galerie@stephanwitschi.ch www.stephanwitschi.ch

Portraits



Zena Assi
Portrait with IKEA black lamp #1, 2022
41 x 31 cm
mixed media and paper collage on canvas
Edition number 1/1



Zena Assi
Portrait with a fern #2, 2022
41 x 31 cm
mixed media and paper collage on canvas
Edition number 1/1



Zena Assi
It's a thought #1, 2022
80 x 60 cm
mixed media and paper collage on canvas
Edition number 1/1



Zena Assi
It's a thought #2, 2022
80 x 60 cm
mixed media and paper collage on canvas
Edition number 1/1

All art works are signed by the artist and the provenience is the artist's studio

GALERIE & EDITION STEPHAN WITSCHI

Zwinglistrasse 12, 8004 Zürich Telefon +41 44 242 37 27 galerie@stephanwitschi.ch www.stephanwitschi.ch

Ecce Homo - Etching - Prints



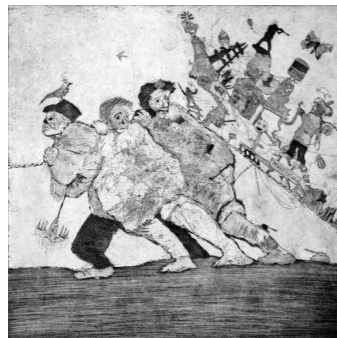
Zena Assi
Superman, 2019
30 x 30 cm / framed 40 x 40 cm
etching and aquatint on archive paper
Limited Series of 10



Zena Assi
The Amazon, 2019
30 x 30 cm / framed 40 x 40 cm
etching and aquatint on archive paper
Limited Series of 10



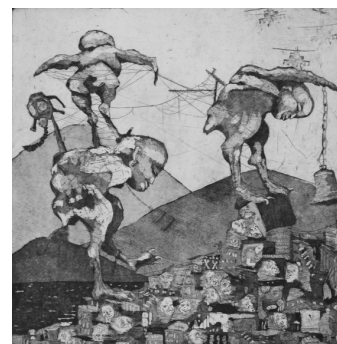
Zena Assi
God's away on business, 2019
30 x 30 cm / framed 40 x 40 cm
etching and aquatint on archive paper
Limited Series of 10



Zena Assi
Slide to unlock, 2019
30 x 30 cm / framed 40 x 40 cm
etching and aquatint on archive paper
Limited Series of 10



Zena Assi
AlBalad, 2019
30 x 30 cm / framed 40 x 40 cm
etching and aquatint on archive paper
Limited Series of 10



Zena Assi
Chicken nuggets, 2019
30 x 30 cm / framed 40 x 40 cm
etching and aquatint on archive paper
Limited Series of 10

All art works are signed by the artist and the provenience is the artist's studio

GALERIE & EDITION STEPHAN WITSCHI

Zwinglistrasse 12, 8004 Zürich Telefon +41 44 242 37 27 galerie@stephanwitschi.ch www.stephanwitschi.ch

BOTTLES



Zena Assi
BOTTLE #1, 2022
h 17 x l 9 x w 9 cm
glazing and transfer on ceramics
Edition number 1/1



Zena Assi
BOTTLE #2, 2022
h 17 x l 12 x w 7 cm
glazing and transfer on ceramics
Edition number 1/1



Zena Assi
BOTTLE #4, 2022
h 18 x l 9 x w 9 cm
glazing and transfer on ceramics
Edition number 1/1



Zena Assi
BOTTLE #5, 2022
h 17 x l 9 x w 10 cm
glazing and transfer on ceramics
Edition number 1/1



Zena Assi
BOTTLE #6, 2022
h 18 x l 9 x w 9 cm
glazing and transfer on ceramics
Edition number 1/1

Two ceramic works have been selected to be part of the upcoming summer exhibition at the Royal Academy of Arts in London this June, 2022.

All art works are signed by the artist and the provenience is the artist's studio

BOTTLES



Zena Assi
BOTTLE #7, 2022
h 19 x l 11 x w 11 cm
glazing and transfer on ceramics
Edition number 1/1



Zena Assi
BOTTLE #8, 2022
h 17 x l 11 x w 11 cm
glazing and transfer on ceramics
Edition number 1/1



Zena Assi
BOTTLE #9, 2022
h 19 x l 9 x w 8 cm
glazing and transfer on ceramics
Edition number 1/1



Zena Assi
BOTTLE #11, 2022
h 17 x l 10 x w 9 cm
glazing and transfer on ceramics
Edition number 1/1

Two ceramic works have been selected to be part of the upcoming summer exhibition at the Royal Academy of Arts in London this June, 2022.

GALERIE & EDITION STEPHAN WITSCHI

Zwinglistrasse 12, 8004 Zürich Telefon +41 44 242 37 27 galerie@stephanwitschi.ch www.stephanwitschi.ch

PLATES



Zena Assi
KARL, 2022
diameter 9 cm
glazing, underglazing and transfer on ceramics
Edition number 1/1



Zena Assi
MYRIAM, 2022
diameter 9 cm
glazing, underglazing and transfer on ceramics
Edition number 1/1



Zena Assi
ROSALIND, 2022
diameter 23 cm
glazing, underglazing and transfer on ceramics
Edition number 1/1



Zena Assi
SABINE, 2022
diameter 20 cm
glazing, underglazing and transfer on ceramics
Edition number 1/1



Zena Assi
WASSIM, 2022
diameter 9 cm
glazing, underglazing and transfer on ceramics
Edition number 1/1



Zena Assi
AGATHA, 2022
diameter 23 cm
glazing, underglazing and transfer on ceramics
Edition number 1/1

All art works are signed by the artist and the provenience is the artist's studio

PLATES



Zena Assi
ALICE, 2022
diameter 9 cm
glazing, underglazing and transfer on ceramics
Edition number 1/1



Zena Assi
DILLON, 2022
diameter 20 cm
glazing, underglazing and transfer on ceramics
Edition number 1/1



Zena Assi
DOLLY, 2022
diameter 10 cm
glazing, underglazing and transfer on ceramics
Edition number 1/1



Zena Assi
Harry, 2022
diameter 23 cm
glazing, underglazing and transfer on ceramics
Edition number 1/1



Zena Assi
JOHN, 2022
diameter 20 cm
glazing, underglazing and transfer on ceramics
Edition number 1/1